

EL Bimetal Thermometer

FEATURES

- Hermetically sealed case to prevent entry of moisture, interior corrosion and coil freeze up
- Maxivision® dial for precise readings (minimize parallax reading errors)
- Silicone filled for reduction of pointer flutter on high vibration application and provides improved response times
- Custom dials
- Everyangle™ connection dial can be rotated 360°

TYPICAL USES

- Offshore Oil Rigs
- Chemical and Petrochemical Plants
- Water and Wastewater Pressure Control
- Pulp and Paper
- Refineries
- Power
- General Industrial
- HVAC
- Equipment Skids
- Pharmaceutical / Biotech
- Food and Beverages



EL Bimetal
3", 5" dial sizes



SPECIFICATIONS

Accuracy:	±1% of span ASME B40.200 (B40.3 Grade A)	
Stem Length:	2½" to 24"	
Dial Sizes:	3", 5"	
Dial Style:	Maxivision®, black figures on white background	
Overtemperature Limits:	Top of Range °F up to 250	Max. Over Temperature 100% of span 50% of span
Process Connection:	½ NPT and ½ NPT union and ½ NPT adjustable union	
Stem diameter:	0.250", 0.375"	
Case & Stem:	304 SS, 316 SS	
Process Connection Location:	3", 5" Everyangle™, Rear	
Pointer:	Black	
Window:	Polycarbonate	
Approvals:	RoHS	

MIN/MAX TEMPERATURE LIMITS

Ambient

-40°F to 150°F (-40°C to 65°C)

KEY BENEFITS

- External adjustment
- NEMA 4X/IP66 protection
- Able to perform quick and limited span adjustments
- 5-year limited warranty
- All welded stainless steel construction

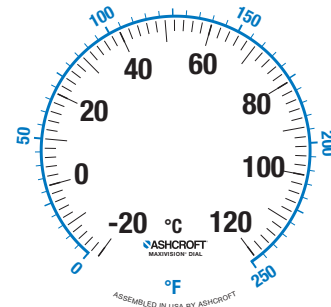
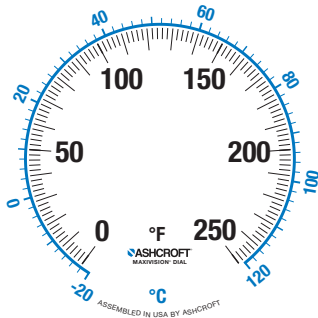
Data Sheet

EL Bimetal Thermometer

ORDERING CODE	Example:	30EL	60	R	060	XSG	0/200°F
Dial Size and Model							
30EL - 3" External adjust liquid filled bimetal		30EL					
50EL - 5" External adjust liquid filled bimetal							
Stem and Connection							
42 - ½ NPT Union (Everyangle™ only) (Allows thermometer to be rotated to desired orientation)							
60 - ½ Fixed NPT			60				
70 - ½ NPT Adjustable Union (5" Everyangle™ only) (Allows thermometer to be rotated to desired orientation)							
Connection Location							
R - Rear connection				R			
E - Everyangle™ connection							
Stem Length (Consult factory for custom or longer stem length)							
025 - 2½"							
040 - 4"							
060 - 6"					060		
090 - 9"							
120 - 12"							
150 - 15"							
180 - 18"							
240 - 24"							
Options - (if choosing an option(s) must include an "X")							
CS - Dual scale						X	
DM - Dial marking							
NH - SS tag							
YW - 316 SS construction (5" Everyangle™ connection)							
C4 - Individual calibration certification							
3B - ⅜" stem diameter with ½ NPT							
Temperature Ranges (see table on page 3)							
0/200°F							0/200°F

Data Sheet

EL Bimetal Thermometer



Fahrenheit Inner Range

Inner °F	Outer °C	Restrictions
-40/120	-40/50	
-40/160	-40/70	
-20/120	-30/50	
0/100	-20/40	4" Min for Everyangle™
0/150	-20/65	
0/200	-20/93	
0/250	-20/120	
0/300	-20/150	
0/350	-20/170	
0/500	-20/260	
20/120	-5/50	4" Min for Everyangle™
30/130	0/55	4" Min for Everyangle™
30/240	0/115	
50/300	10/150	
50/400	10/200	
50/550	10/290	

Celsius Inner Range

Inner °C	Outer °F	Restrictions
-40/100	-40/210	
-40/160	-40/320	
-30/70	-20/160	
-20/180	0/350	
-20/120	0/250	
-10/50	20/120	
-10/110	20/230	
0/60	30/140	4" Min for Everyangle™
0/100	30/210	
0/120	30/250	
0/150	30/300	
0/200	30/400	
0/250	30/480	
0/300	30/570	
10/150	50/300	

Single Scale Ranges

Restrictions	°F	°C	Restrictions
	-40/100	-40/100	
	-40/160	-40/160	
	-20/120	-30/70	
4" Min for Everyangle™	0/100	-20/180	
	0/150	-10/50	
	0/200	-10/110	
	0/250	0/50	4" Min for Everyangle™
	0/300	0/60	4" Min for Everyangle™
	0/500	0/100	
4" Min for Everyangle™	20/120	0/120	
4" Min for Everyangle™	30/130	0/150	
	30/240	0/200	
	50/300	0/250	
	50/400	0/300	
	50/550	10/150	

EL Bimetal Thermometer

DIMENSIONS in [] are millimeters

For reference only, consult Ashcroft for specific dimensional drawings

Dial Size (Inches)	Process Connection Locations	A	B	C	G	H	S	NPT	Hex.	Weight (oz) ⁽¹⁾ S - 2 1/2"
3	Rear	2 3/32 [53]	1/2	3/8 [10]			(2)	1/2	7/8	7
3	Everyangle™	2 3/32 [53]	1/2	3/8 [10]			(2)	1/2	7/8	7
5	Rear	5 1/32 [128]	19/32	3/8 [10]			(2)	1/2	7/8	16
5	Everyangle™	5 1/32 [128]	19/32		1 7/8 [48]	3 21/32 [93]	(2)	1/2	7/8	25

NOTES:

1. Add 1 oz. for every 2" inches of stem length
2. "S" dimensions are 2 1/2, 4, 6, 9, 12, 15, 18 and 24" (STD.). Stem diameter is 1/4" (STD.)

